

WHM

Equipment Co.

OVER/UNDER SYSTEMS



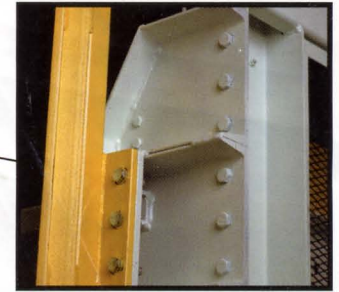
Optional safety light curtain reduces chance of injury due to reaching into mechanized areas



State-of-the-art electrical controls assure Auto-Queue will provide years of trouble-free operation



Optional close-center rollers provide more capacity & accommodate a wide range of pallet footprints



Structural weldments and heavy-duty construction stand up to any parts feeding task



User-friendly operator control panel features simultaneous 2-button activation for added safety



Low maintenance hydraulic lift features wide base and structural rigidity to provide the utmost in stability

Rugged, heavy-duty chain drive assures the power to move heavy-duty pallets or containers

Used for in-process manufacturing operations

Auto-Queue™ Doubles Efficiency Of Floor Space & Improves Operator Productivity By Queuing Parts/Bins Automatically

Auto-Queue staging conveyors from WHM take time out of forklift part-feeding operations as they increase productivity of operators in your manufacturing facility-and Auto-Queue does it all in half the footprint!

Unique constant-queuing over-and-under conveyor includes:

- Lower roller bed conveyor that accepts, moves parts bins or pallets
- Scissors lift that moves parts carrier into processing & takeaway positions
- Upper roller bed conveyor that returns parts bins/pallets for forklift pickup

Three functions, one footprint!

Popular Auto-Queue Conveyors Provide 5-Way Benefit

1 Space Savings

Both in-bound parts and out-bound container/pallet conveyors are within single footprint, giving you twice the queuing/storage in half the space.

2-tier queuing reduces space requirements!

2 Improved Ergonomics

Scissors lift brings parts bins/pallets to the level most comfortable for operators, meaning less fatigue, more productivity, safer operation

3 Greater Safety

Forklift operations are physically

separated from parts operators

4 Increased Forklift Efficiency

Forklift operators able to feed and retrieve parts bins/pallets in one pass from one spot with less maneuvering, minimal deadheading

More efficient parts flow means higher productivity!

5 Higher Operator/Production Capacity

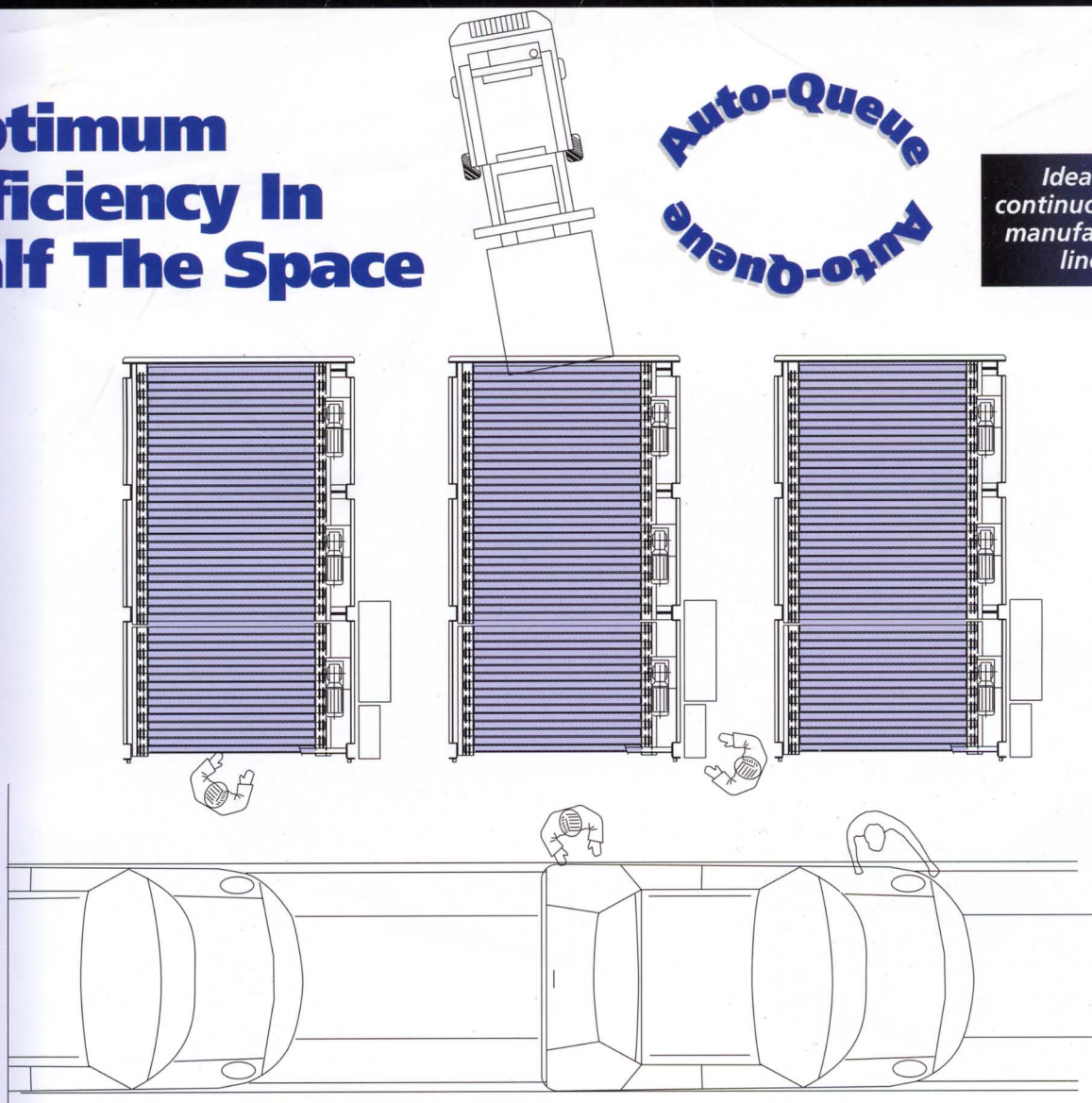
Constant part feeding minimizes non-productive time waiting for parts carriers to arrive or empty bin/pallets to be removed



Optimum Efficiency In Half The Space

Auto-Queue
Auto-Queue

Ideal for continuous-feed manufacturing lines!

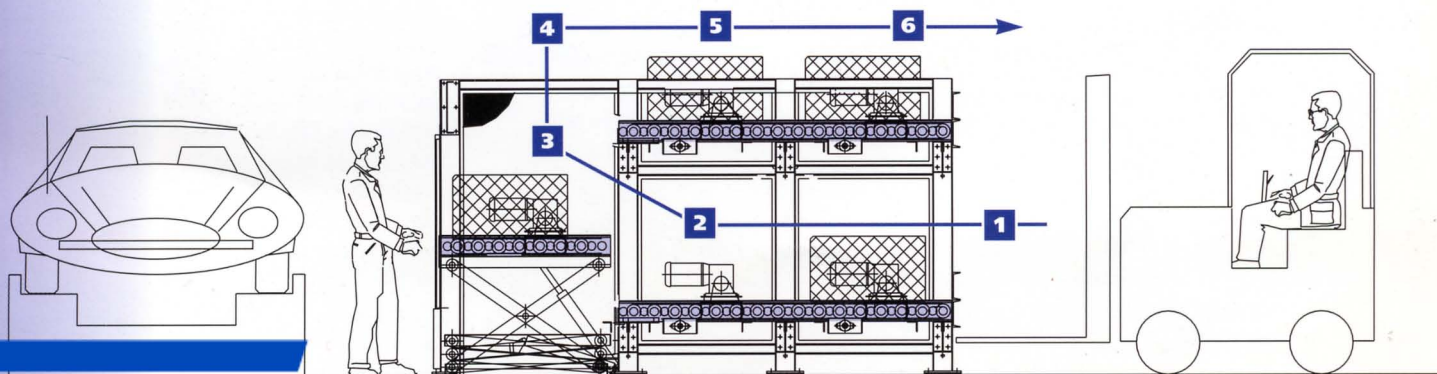


Sequence of Operation

- 1 Forklift loads parts/bin
- 2 Product advanced by power rollers
- 3 Operator advances parts/bin to scissors lift, bed elevates to working level for processing
- 4 Empty bins are elevated to top roller bed
- 5 Power rollers move bins to exit stop
- 6 Forklift removes empty bins from upper bed

Options

- 1 Auto-mechanical stops
- 2 Side-by-side models
- 3 Close-center power rolls
- 4 Light curtain



WHM
Equipment Co.

Supplier Of Standard & Custom Conveyors Since 1968

513-771-3200

